
HAWSTEAD JOURNAL

Editors: Judy & Dave Carter



**HAWSTEAD
VILLAGE FETE
& FLOWER SHOW**

 **Sunday 3 Sept** 
from 2pm onwards at the Village Hall

**BBQ • Bar • Tea Tent • Mini-Auction
Book Stall • Adult/Child Tombolas
Fun Games • Craft Stalls • Tractors
Kiddies Corner • Produce Show**

Flower & Produce Show includes a junior section – 7 and under and 13 and under. Prizes for the most points in each group. Entry forms for all classes can be obtained from susanne@pamplin.me.uk.

CHURCH SERVICES - HAWSTEAD UNLESS OTHERWISE STATED

JULY

Sunday 9th	08.30	Said Eucharist
Sunday 23rd	11.00	Morning Prayer

AUGUST

Sunday 13th	08.30	Said Eucharist
Sunday 27th	11.00	Morning Prayer

HAWSTEAD COMMUNITY COUNCIL

After a fun Summer Solstice BBQ, which nearly 60 villagers attended, we can now look forward to our end-of-Summer fete on Sunday 3 September (2-5). It's a great opportunity to relax in the (hopefully) sunshine and catch up with neighbours and friends. But this event needs your help to run.



We need the following:

1. **Bar** - need volunteers for an hour on the bar serving drinks and sorting out the money (I have two volunteers (JW/AT), but need more).
2. **Splat the Rat** - family required to run it - sort out poster, prizes, etc. - we have all the equipment.
3. **Bowling** - family required to run it - sort out poster, prizes, etc. - we have all the equipment.
4. **Children's tombola** - family required to run it - we have all the prizes.
5. **Adult tombola** - family required to run it - we have all the prizes, they just need ticketing, arranging on a table and tickets sold on the day.
6. **Cakes/biscuits** - donations required; please liaise with Jo Butt (joandstevebutt@yahoo.co.uk) to offer donations and time manning the tea/coffee area.
7. **Other stalls** - if you have something you would like to run or an idea for a stall, please let me know - NB This event is our village fundraiser, so all profits go to the village hall unless you 'purchase' a table to sell your own items.

Our thanks to the following villagers who have confirmed that they will be taking charge of:

- BBQ - Steve Butt & Chris & Ben Pamplin
- Book stall - Bullen family
- Produce Show - Simon Miller
- Compere/auctioneer - Clive Robinson
- Teas/coffees/cakes - Jo Butt, Liz Cooper
- Tractors - Pat Baker

- continued

DONATIONS REQUIRED

We would appreciate donations for the following stalls:

- Adult tombola - anything you think would make a great prize - please drop off with Susanne at Park House, Hawstead, IP29 5NL.
- Children's tombola - anything you think would make a great prize - please drop off with Susanne at Park House, Hawstead, IP29 5NL.
- Cakes/muffins/biscuits - for the tea/coffee area - to be delivered on Saturday 2 or Sunday 3 September - please liaise with Jo Butt.
- Book stall - any books, DVDs, etc., no longer wanted - please ensure they are of a quality that will sell - they have all their pages, etc! - please leave at the village hall when open.

OPEN CAKE / MEN'S CAKE

Special thanks must go to Joyce Dainty for sorting out recipes for our cake competitions in the Produce Show. The schedule is attached, and everyone can now start practising for the coveted titles.

PRODUCE SHOW

Please take a look at the attached schedule and make plans to take part in some way. Whether you're a keen artist or a grower of enormous onions, an amateur baker or an enthusiastic photographer, we should all be able to enter at least one class!

Susanne

HAWSTEAD VILLAGE HALL



**BEAUTIFUL OAK-BEAMED HALL WITH KITCHEN, MEETING ROOM
AND WOODEN OUTSIDE PLAY AREA IN A RURAL SETTING**

... available to hire for all celebrations, business meetings and club events (up to 100 guests standing or 80 seated). Facilities include a kitchen with optional crockery, cutlery and linen hire, internet access, drop-down projection screen, sound system and separate meeting room. Cleaning service included. IP29 5NP. See website for hire rates.

WWW.HAWSTEADVILLAGEHALL.CO.UK

For bookings enquiries, please contact Sarah Webb on 01284 388124 or sarahlwebb84@gmail.com

REPORT THAT POTHOLE

It is so easy for any of us to report potholes needing repair if we use the Highways Reporting Tool on the Suffolk County Council website: www.suffolk.gov.uk then click on report and then click on report a pothole. This will bring up a map on which you click on the location of the defect and then just fill in a few extra details. You can use the system to report defects anywhere in the County, not just locally.

Alternatively, you can still e-mail customer.service@suffolk.gov.uk or phone 0345 606 6171.

Michael Harrison



GLYN'S OPEN GARDEN



**Suffolk
Accident
Rescue
Service**

AN EMERGENCY
MEDICAL CHARITY
EST 1972

Hawstead Open Garden, Sunday 11th June in aid of Suffolk Accident Rescue Service (SARS)

The weather was kind and Glyn's garden was, as always, amazing. We had plenty of visitors, some being admirers of Glyn's green fingers, so came again to relax in and enjoy the garden, as well as supporting this emergency medical charity.

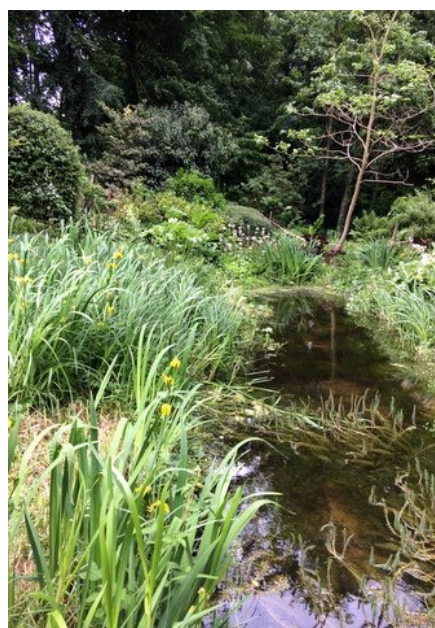
Ideas for visitors own gardens were discussed over the refreshments in the Village Hall, whilst a raffle & auction all raised additional much needed funds for SARS.

SARS relies on voluntary donations to enable the charity to continue to provide advanced pre-hospital medical care in serious trauma or life-threatening medical incidents throughout Suffolk.

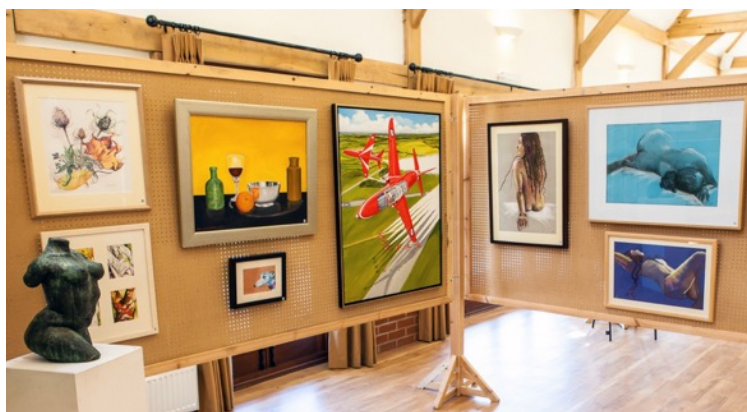
If you are part of a local group or club and would be interested in learning more about the work of SARS, contact Ben Hall to arrange a speaker.

www.sars999.org.uk
sarsHQ@gmail.com

GLYN'S OPEN GARDEN - *CONTINUED*



HAWSTEAD FINE ART FAIR 2017



LAST CALL FOR ENTRIES TO THE HAWSTEAD FINE ART FAIR 2017 10th to 15th August

Open to amateurs and professionals aged 16 and over, exhibitors will be included on a first come, first served basis – so come on Hawstead residents, this is your chance to show off your artistic talent!

Completed entry forms need to be submitted by **FRIDAY 21st JULY** so please contact me or Bill Crockford as soon as possible if you'd like to join in, either by exhibiting your work or if you could spare an hour or two helping us with the event.

Janet Watson / Tel. 388030
email. janet@peninsulafilms.com

Bill Crockford / Tel. 388467
email. margbillc@btinternet.com

HAWSTEAD GOLF CHALLENGE

A Reminder for the Hawstead Golf Challenge.

Anyone who would like to take part on 11th August at Bury Golf Club please give Dave Dawson a call on 386682 or email five.dawsons@btinternet.com as soon as possible.

Thank you.

*Last years contenders -
yes a bright and sunny
day at Bury St Edmunds
Golf Club!*



SUMMER SOLSTICE VILLAGE BBQ

On Saturday 24 June more than 55 residents and friends gathered together at Hawstead Village Hall for our annual village BBQ. In a relaxed and friendly atmosphere, villagers enjoyed some delicious sausages, burgers and marinated chicken (with vegetarian alternatives), as well as salads and a selection of desserts. Our thanks go to Jo Butt who organised the ticket sales and co-ordinated the dessert/salad donations, to Steve Butt and Chris Pamplin who cooked the meat, to everyone who brought along some food for the event and to those members of Hawstead Community Council who helped to set up before, host and clear up after the BBQ. This was a lovely family event and much enhanced by the sounds of children playing in the long grass and the play area. If you missed it this year, try to come along next time.

Susanne White

On behalf of Hawstead Community Council



SOS-S

Save Our Suffolk-Swifts



In the last 20 years the population of swifts in England has fallen by between 40% and 50% which puts it on the amber list! The common swift (*Apus apus*) is frequently grouped with swallows and house martins but is an unrelated species, being in the family of humming birds. It used to be assumed that swifts did not have any legs thus the Latin name *Apus* which means legless. Swifts are real record breakers, they are claimed to be the most aerodynamic of all birds and one of the fastest, 70mph in level flight. When they fledge they fall out of the nest and immediately fly (no practice) and continue on the wing, traveling 500 miles per day until they come to nest and rear their own chicks after having flown to South Africa and back, twice, and continue almost continues flight for an average ten year life.

They feed (insects), mate and sleep on the wing. They fly up 2 miles (10500ft) then slowly spiral down taking “cat-naps” on the way. Search YouTube and Wikipedia for more information. Originally swifts would have nested in small holes in trees and cliffs then man started to construct buildings with lots of convenient holes, typically under the eaves of roofs, so swifts became very urban. Modern building methods and maintenance have done away with most of the holes so swifts can’t find nest sites thus the drop in population.

What is the solution? Specially designed nest boxes mounted in a suitable location at least 4.5 metres above the ground. Swifts like to form colonies so at a good site many nest boxes can be expected to be occupied especially if recorded swift calls are played morning and evening at nesting time. It has been found that a very good place to establish a swift colony is in a church bell tower, they do not make a mess, enter buildings or are disturbed by ringing the bells. But are there any swifts in Hawstead that could be attracted to All Saints Church. If you have seen any swifts or know where they are nesting in Hawstead, please let me know?

Simon Miller 01284 388841 simon.j.miller@talktalk.net

**WE ARE
MACMILLAN.
CANCER SUPPORT**

Breckland Wind Ensemble
Presents
Music for Macmillan
Saturday 15th July,
Drop in from 3.30pm to 5.30pm
Hawstead Village Hall
The Green
Hawstead,
Suffolk
IP29 5NP
A relaxed afternoon in beautiful Suffolk
countryside, wonderful music from Bach to 20th
century composers, cake, tea/coffee, soft drinks,
good company, children's playground.
Free entry Donations welcome, proceeds to
Macmillan Cancer Support
For more information contact Tania Nolan, 07824553680, tanianolan@btinternet.com

Background information about the Breckland Wind Ensemble

The Breckland Wind Ensemble was formed because there were many woodwind players in the area who were keen to improve their skills and needed a group to join. After the first meeting in October 2016, the enthusiasm and commitment of the musicians was very clear and the group is now going from musical strength to strength. Opportunities to play Chamber music are few and far between and BWE has now found its niche in this part of East Anglia. We intend to build on the players' enthusiasm and commitment to make good music while enjoying playing and supporting each other. After an open rehearsal in March, we are now ready to present our first charity fundraising concert, in aid of Macmillan.

The event will be an informal afternoon tea party, with background music from the entire ensemble and smaller chamber groups. Our repertoire spans Bach to contemporary composers and so there is sure to be something for everyone.

OUR LOCAL COUNTY COUNCILLOR



Karen Soons

County Councillor for Thingoe South

Mob: 07864 601887

email: karen.soons@suffolk.gov.uk



Endeavour House, 8 Russell Road,
Ipswich, Suffolk IP1 2BX
Customer Services 0345 606 6067
customerservices@suffolk.gov.uk
www.suffolk.gov.uk

BIKESCOOL

Fun tuition for young riders every Friday from July 28th, 10-11am and 11.15am -12.15pm.

Qualified instructors delivering fun activities and developing cycling skills, in our garden area, overflow car park and cyclo cross course.

All levels catered for, from 8-15 years.

Parent needs to remain in attendance.

£6 for one hour, £10 for two hours.

Book places on 01284 386884.

Barry Denny
Maglia Rosso



Hawstead Parish Free Tree Scheme

A scheme providing free native trees and shrubs to be planted where they will enhance Hawstead and make it an even better place to live.

Calling all villagers young and old – do you have somewhere that would benefit from the planting of a tree or two?

Would you like to plant one or more trees to enhance the village? The Parish Council is funding a new tree scheme this winter to provide free young native trees and shrubs to be planted by villagers who would like to make the village a nicer and greener place.

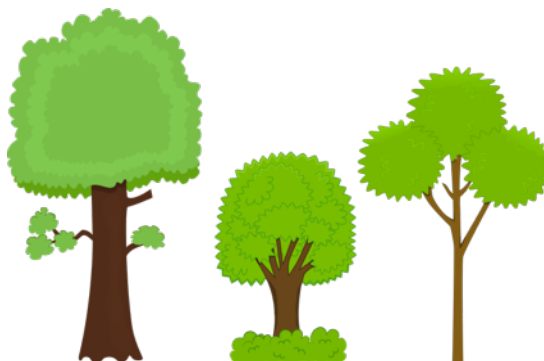
Don't worry if you only have a small space. Garden trees are important and account for about a quarter of the UK's non-woodland trees. A mature tree brings shade, privacy and birdsong into your garden and can even help raise a property's value.

This is an advance warning to let you have time to ponder and dream up creative planting ideas!

Full details will be published in the September Journal with a list of tree and shrub species available.

Ideas could include:

- Landscape enhancement: where the planting will enhance the wider landscape, add interest to particularly bare, open areas or perhaps where there was more tree cover in the past. For example shrubs could gap up a thin hedge or trees could be planted which will mark a historic boundary or bank. The new planting should aim to be in character with and complement the existing native woody vegetation.
- Wildlife thickets for bird nesting. Gapping up and adding varied native species to spice up single species hedges with blossom and berries.
- Along ditches and water courses to help shade water courses. This can enhance wildlife and water quality.
- Plantings should be well suited to the location for scale, shade, moisture requirements etc. for the long term.
- **Small print:** *Tree provision will be at the Parish Council's discretion. Depending on amount of interest priority is likely to be given to places where plantings are visible by the public and enhance the local landscape and wildlife.*
- Site specific advice can be offered if wanted



James Carr, Parish Tree Warden Tel. 386245

Jamesandchristabel@tiscali.co.uk

Stowmarket _____ Chorale

Young Singers Bursary Scheme

Stowmarket Chorale think that getting young people into choral singing is a very important part of what we do. New and young singers are the future of choral singing.

We run an annual bursary scheme for young singers. The bursaries are awarded in September and last for one year, although you may apply in consecutive years.

About us

Stowmarket Chorale has enriched the community life of Stowmarket and surrounding towns and villages for over 100 years. With about 50 members it attract singers from a wide area of mid Suffolk. The Chorale has performed in a wide variety of venues including The John Peel Centre, Stowmarket, the United Reformed Church and Parish Church in Stowmarket and the Apex in Bury St Edmunds. Further afield, the Chorale has performed at Snape Maltings, Ely and Rochester Cathedrals. In recent years our concerts have included: Mozart – *Coronation Mass*, *Vespers*, John Rutter – *Requiem*, Elgar – *Sea Pictures*, Alexander L'Estrange – *Ahoy!*

Details of Scheme

Applicants should be under 24 years old (on September 1st in the year you are applying). If you are successful you receive:

- Free membership of Stowmarket Chorale for one year
- £200 per annum, paid in instalments after each concert. There are normally three concerts and two Singing Days a year.
- The possibility of solo work, and the chance to build your musical C.V.
- Free musical scores

In return we ask that you attend regular rehearsals, and sing at all concerts.

For further details, email: secretary@stowmarketchorale.org.uk

**Rotary Club of Bury St Edmunds Abbey
invites you to...**



Fizz On Friday
with music and supper

In aid of Suffolk Accident Rescue Service and other local charities
Sponsored by Ashton Legal

Friday 8th September 7.00 - 10.30pm

At the beautiful Hawstead Village Hall on The Green, Hawstead IP29 5NP

Enjoy an evening of drinks and good food with local talented musicians and some musical comedy.
Artists include Imogen Ridge (harp), Louise Cockerill (soprano), Liliana Luongo (clarinet), Fran Evershed (flute) and singers from Bury Operatic Society accompanied by Calvin Goymer

Tickets £20.00

Children £7.50

includes drinks and two course supper

For tickets and further information contact Bridget Alexander:

Tel: 01284 749009

Email: bridgetalexander6@hotmail.com

Ashtons
LEGAL



**The Hawstead Journal was sponsored by
Phil Baker, Cooks Farmhouse**

Thank you for your offers to sponsor the Journal. I keep a list and will be in contact when the need arises.

Thank you for your contributions to this edition. Our next Journal will be September / October. Please forward anything you have by 4th September 2017.

Judy Carter - Oakhill House, Pinford End, Tel: 01284 386512 or judy@mmgd.co.uk

DANGEROUS DOG ACT

Dog owners be advised there is a Dangerous Dog Act. Our dog was attacked by an off-lead medium size blond dog. The incident occurred at 10:00 am on 3rd June on the Pinford End footpath. Although the owner apologised, he did not put his dog on a lead.

Florence and Doc Lacey



HAWSTEAD READING GROUP

Our May meeting was held at Jo Butt's where we discussed *"The Promise"* by Lesley Pearse. On the outbreak of the First World War Belle Riley's husband Jimmy enlists and heads for the deadly trenches of northern France. Belle volunteers to help battlefield wounded and is posted to France as an ambulance driver. There a tragic accident brings her face to face with Etienne - a man from her past whom she's never quite forgotten. Torn between forbidden passion, loyalty and love Belle is in an impossible situation. Will she succumb to the dark forces of this most brutal of wars or will fate intervene and finally lead her to lasting happiness? *"The Promise"* vividly describes life behind the front line and the tragic choices that war forces people to make. An emotional and easy read which some of us were not particularly keen on as it is a bit *"chick lit"* and it would probably also have helped to read *"Belle"* first to get background on the characters.

Jo told us some of the history of her cottage which was very interesting whilst we enjoyed her sausage rolls and a glass of wine!

In June we met at Judy Carter's where our book for discussion was *"The Paying Guests"* by Sarah Waters! It is 1922 and London is tense. Ex-servicemen are disillusioned, the out of work and hungry are demanding change and in south London in a genteel Camberwell villa, now bereft of brothers, husband and even servants, life is about to be transformed as impoverished widow Mrs Wray and her spinster daughter Frances, are obliged to take in lodgers. With the arrival of Lilian and Leonard Barber, a modern young couple of the 'clerk class', the routines of the house are shaken up in unexpected ways! As passions mount and frustration gathers no one can foresee just how far reaching, and how devastating, the disturbances will be! This is vintage *Sarah Waters* where she describes the mood, social concerns and setting beautifully. We had a lively discussion on women's role in society in those times and as with most of her books this is quite controversial as the relationship between Frances and Lilian blossoms into something a lot more intimate. The ending is unsatisfactory as we all felt that an injustice had been done.

We welcomed Becca Bedford to the group and after Judy's Pimms and canapés it was lovely to see Jessie - Judy's adorable new yellow Labrador puppy!

Our next meeting will be on 5th July at Angela Parrett's where we shall be discussing *"The Handmaid's Tale"* by Margaret Atwood.

Ann Gibbs

HAWSTEAD APPRECIATION AND TASTING SOCIETY (WINE CLUB)

A Spanish theme was Maggie and David's choice for our May meeting. Interestingly and a 'first' for HATS we were introduced to three types of Sherry, a Manzanilla (drier than a Fino), a Palo Cortado, starting life as a fino but as the flor yeast fails to develop it develops a dark colour and finally an Oloroso, said to have an aroma of hazelnuts.

We were also introduced to a Caixas Godello from Majestic, the only white wine of the evening, and ultimately voted our favourite! Supposed to have a nose of lemon, crunchy pear, melon and floral notes with a palate of citrus zesty notes, suggested to be enjoyed with salt cod! What a bargain at £7.99 a bottle. The Tempranillo grape featured in our first red, Marques de Calatrava 2014, which was deemed to be our second choice of the evening. Our first Sherry, a Manzanilla came third.

A most enlightening and informative evening; well done David and Maggie.

We decided to repeat the success of last year's annual dinner by celebrating it at the Hall on the Green. The venue was perfect but disappointingly the weather was not conducive to the doors being open, as it was decidedly chilly for a June evening. However this definitely didn't dampen our spirits and the Champagne flowed, accompanied with an array of delicious canapés.

As we took our seats David spoke a little about the events of the previous 12 months and thanked all our members for their continuing support.

For the first time we had two different Rosé wines to accompany our starter, together with a white Sauvignon Blanc and an Albarino (unusually both from New Zealand). Our reds were a Pinot Noir from California, a Chilean Cabernet Sauvignon and our favourite Amarone from Italy.

The hall with bunting and balloons, together with formally set tables looked splendid.

Cheers to the next year.

Judy Carter



REGULAR EVENTS

Breathe Easy	Weekly on Tuesdays 9.15 - 10.15 am
Carpet Bowls	Weekly on Tuesdays 7.30 pm
Reading Group	1st Wednesday of the month 7.30 pm (held in members' homes)
HATS (Wine Club)	Last Thursday of the month 8.00 pm (not December)
Hawstead Craft Group	Last Monday of the month 10am - 4pm (not December)
Hawstead Oil Buying Group	Orders placed monthly (contact Michael Harrison 01284 386157 email: mharrison151@btinternet.com)

HAWSTEAD PARISH COUNCIL MEETING DATES

*Meetings held at the Village Hall unless otherwise stated
Everyone is warmly welcome to attend, in fact you are positively encouraged to come!*

Meetings held bi-monthly on the third Thursday of the month at 7.30pm.

Dates arranged are:

21st September

16th November

HAWSTEAD COMMUNITY COUNCIL MEETINGS

We meet once a month in the Village Hall (usually the first Monday) to discuss the village hall and plan future events.

While all residents are members of the Community Council, we would be delighted to welcome to our meetings all those interested in getting a bit more involved in village life.

FORTHCOMING DATES FOR YOUR DIARY

In the Village Hall unless otherwise stated.

Hawstead Games Night	Friday 7th July – 7pm onwards
Music for Macmillan	Saturday 15th July - 3.30pm - 5.30pm
Community Council Meeting	Monday 7th August 6.30pm
Hawstead Fine Art Fair	Thursday 10th until Tuesday 15th August
Hawstead Golf Challenge	Friday 11th August at Bury Golf Club
Hawstead Fete	Sunday 3rd September
Fizz on Friday	Friday 8th September 7pm - 10.30pm
Community Council Meeting	Monday 11th September 6.30pm
Hawstead Parish Council Meeting	Thursday 21st September 7.30pm
Hawstead Games Night	Friday 6th October – 7pm onwards
Macmillan Coffee Morning	Saturday 7th October
Blackheart Orchestra	Friday 13th October 7.30 for 8pm
Hawstead Parish Council Meeting	Thursday 16th November 7.30pm