

Letter from the Editor

Having lived in Hawstead for just over a year now I have joined the community in a baptism of fire on two counts and realise that it is very dangerous to accept invitations to drinks dos!

Firstly, after 3 bottles of red wine my husband Norman, volunteered both his and my services to swell the ranks of the choir at the Carol Service and secondly at another pre-Christmas drinks do I agreed to edit the Hawstead Journal one month in 2003.

Having completely forgotten this agreement I was horrified when Brian Kew as past editor turned up with all the "bump" and said don't worry there's a prompt sheet with a list of the people to contact for contributions and off you go!

So here is my effort for February 2003 and many thanks to Sylvia Miller who has agreed to edit the March issue.

Norman has gone into a decline since Roy and Bernice left the Metcalfe Arms having been the most popular landlords in recent years. Good luck to them at their new pub, the Swan in Lawshall, but we shall miss them greatly.

Ann Gibbs

The editor for the next issue will be Sylvia Miller Tel: 388841.

Apologies:

First to those who have inadvertently not received their Journal recently and secondly to David Tolhurst & Robin Whitfield for the incorrect acknowledgement in the January Issue.

Answers to the Hawstead Quiz

- | | |
|--|-----------------|
| 1. c980 | 6. 60% |
| 2. South from the village sign towards Lawshall. | 7. 1946 |
| 3. 101 | 8. 385 acres |
| 4. 1478 | 9. 215 years |
| | 10. Who knows?! |



Supported by Cecil & Larter Ltd
Horringer

Bury St Edmunds Suffolk
01284 735856

Printed by CandLe  Marketing Tel 01284 735177

Editor Ann Gibbs



Hawstead Journal

For the Village by the Village

Volume 2, February 2003

Parish Council

Elections: At its Meeting held at the Metcalfe Arms on 16th January, the Council received official notification that the St. Edmundsbury Borough Council was one of the 35 authorities in the country chosen by the Government to pilot all-postal ballots when the local government elections for borough and parish councillors are held this year.

This means that in the event of a contest in either election, there will be no polling station provided on 1st May. Instead, everyone on the current Register of Electors for Hawstead will be sent their ballot papers through the post for subsequent return (in sealed envelopes provided) either by post or by hand delivery at the Borough Offices on Angel Hill in Bury St. Edmunds.

We are told that electors will receive helpful information about this pilot exercise at the end of March and that the actual postal ballot papers will reach them by 22nd April. The period for the nomination of prospective candidates will run from 18th March until 12 noon on 25th March and the close of the ballot will be at 7 p.m. on 1st May 2003.

Village Hall: Over the years the availability of this valuable amenity has been taken for granted but how we all miss it now! The Hawstead Community Council have held three public meetings to consider what needs to be done about it and have been gathering detailed information on the comparative cost of (a) repairing the existing hall or (b) building a new if all the necessary permissions can be obtained. A final decision is awaited. (See Joan Cook's report later in this issue).

(Continued on page 2 overleaf.....)

Continued from front cover:

Development: Consideration was also given at the Meeting to three planning applications & the Council has recommended the Local Planning Authority to approve the addition of a conservatory to a house at the Pound and the conversion of a redundant barn in Bells Lane into a residence but to refuse a revised proposal for the erection of a new house at Pound Spinney, the whole of which is subject to a Tree Preservation Order. Arrangements are also in hand for the Suffolk Preservation Trust to advise the Parish Council on the introduction of a management plan for the future upkeep of Hawstead's four registered Village Greens plus the Millennium Field.

Parish Clerk

Hawstead Community Council

Dates For your Calendar

Bingo will carry on at Cullum House, but on Tuesdays NOT Thursdays. The new dates will be February 4th and 18th, March 4th and 25th, April 8th and 15th. We are most grateful to Elsa for the continued use of the school room.

Pantomime at The Theatre Royal, Bury St Edmunds:

Sandy Dawson reported that there was a very successful turn out and a full coach party of 14 adults and 16 children attended Cinderella on 10th January at the Theatre Royal, Bury St. Edmunds. A good time was had by all.

S.M.

Great Plant Sale- Proceeds to the Village Hall Fund

No, not a sale of very large plants, but a great sale of annuals and perennials early in May. Since seeds need to be sown now we are giving you early notice of our plans. **Jo Butt** of 5 The Pound, has kindly agreed to co-ordinate the growing of plants but **needs volunteers** with space in their greenhouses to nurture seedlings once they have been pricked out. You can help in other ways too, if you buy plants from the market why not give Jo an order instead or, when you split up your border plants in March, pot up and sell them on at the plant sale. If you have a heap of unused seed trays lurking at the back of the garden shed or buy meat in deep plastic trays from supermarkets drop them off to Jo, Sonja or Joan. But enjoy the meat first! Let's work together to fill the gardens of Hawstead with flowers this summer (4" of snow fell last night) and raise funds at the same time! *J.B.*



All Saints Church- Hawstead Services

February 2003

Sunday 16th	11.00am	Holy Communion
Sunday 23rd	8.30am	Holy Communion (said) BCP

March 2003

Ash Wednesday 5th	7.30pm	Holy Communion
Sunday 9th	11.00am	Matins
Sunday 16th	11.00am	Holy Communion
Sunday 23rd	8.30am	Holy Communion (said) BCP
Sunday 30th	10.30am	Mothering Sunday- Family Service

Mobile Library Service

I noticed in January's journal the schedule for the mobile library service. Simon and I hail from Bexleyheath and I remember once hearing that one of the first mobile van libraries began in Erith/Bexleyheath in the 1930's when the huge suburban housing boom sprawled out of London into Kent. Does anyone know how long the service has been running from Bury? I shall definitely be using the van from now on and perhaps others might like to recommend library books through the Hawstead Journal that they have found "a good read". I'll start the ball rolling with "Out of Town" by Jack Hargraves. A charming and amusing book about the countryside between the 1880's and the 1950's - it's people, their animals, and their farms, their work and recreations. There is only one copy of it and Les Pettit is reading it at the moment. I think he'll enjoy it.

Sylvia Miller

MOBILE LIBRARY VAN SCHEDULE for 2003

Pinford End	12.30 - 12.40
School House	12.45 - 1.05
Whepstead	1.10 - 1.30

Feb 25th	May 20th	August 12th	Nov 4th
March 25th	June 17th	Sept 9th	Dec 2nd
April 22nd	July 15th	October 7th	Dec 30th

This is a wonderful service. Books, videos and tapes can be loaned free of charge. If what you require is not available, just order it and it will invariably be there for collection on the next visit.

The Hawstead Village Hall Project

Latest News: As the temporary plastic roof billows in the wind or fills with rain as the wet weather continues it must appear to passers-by that not much is happening. That is not so! Although the Insurance Company continues to drag its feet the Community Council and the Project Group are busy tackling issues that must be resolved before the project can make progress.

Amanda Brown has been looking at the Community Council's constitution to ensure that the project group is a properly authorised body. This can be achieved by first co-opting Bill Crockford, Dave Dawson and Richard Milns to the Executive Committee of the Community Council, they can then join Alan Brown (Trustee), James Carr and Joan Cook (Exec. Comm. Members) on the sub-committee which forms the project group.

To confirm this proposal we need the consent of members of the Community Council (that's you, the residents of Hawstead). As you will know from the circular distributed with the Quartet an Extraordinary meeting is planned for just that purpose on **Monday 24th February at 8.00 p.m.** in the **Church**.

Sam Jackson, the village hall adviser from Suffolk ACRE has met with the project group and has made some very positive suggestions. However, he also asked some very basic questions, which must be answered before further consultation and planning can go ahead. It is rather like a detective story unraveling the events and decisions taken over twenty-five years ago. So, if you know who owns the village hall and can prove it please contact me.

In addition, at the EGM on the 24th February, we will give you an update on the physical state of the hall, share with you the figures from the insurers and then the project group will outline its consultation programme. Since your ideas and opinions and participation must be central to all that we undertake I do hope that you will give us your support.

Joan Cook, Project Leader

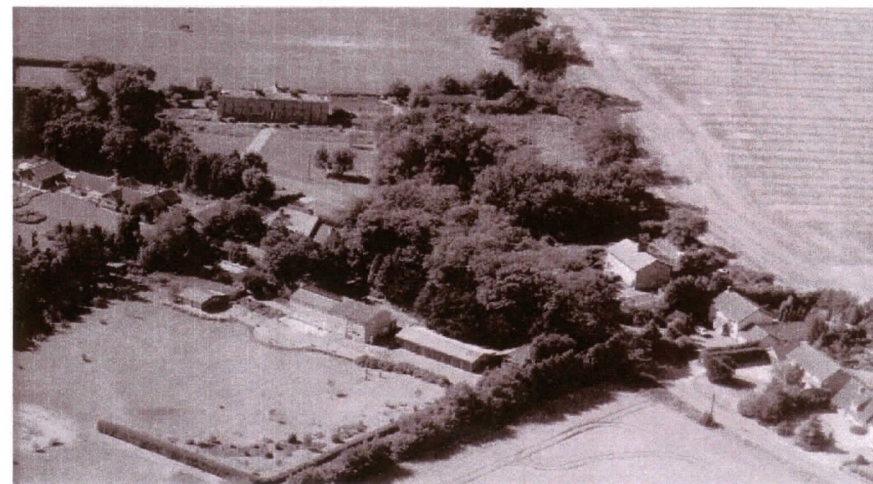
The Metcalfe Arms

Our village pub is at present closed. The London Inn Group have given absolutely no indication as to when it will re-open. Here is the address you should write to if you are concerned about the future of our village pub:-

Tenanted Area Manager, 4 Clarendon Place,
King Street, Maidstone, Kent ME14 1BQ



"The Pound" in 1975



Nature Jottings

**As seen from our windows in the snow on
31st January and 1st February 2003:-**

Pheasant, Jay, Spotted woodpecker, Pigeon, Dove, Kestrel, Mistle thrush, Blackbird, Greenfinch, Chaffinch, Sparrow, Hedge sparrow, Robin, Great tit, Blue tit, Coal tit, Long-tailed tit, Goldcrest.

Any sightings of snowy owl, snow bunting, snow goose or Arctic tern or skua?!!

Rosemary Carr

Please note: If anybody would like to submit any sightings which they feel might be of interest, please do so.

Fyletts Manor 2003

"Opening Shuttered Windows: Reminiscences of a Grand Arctic Experience". A talk by Nell Berisford Jones on Saturday 8th March, 10.30 a.m. to 12.00 approx.

"The Ship of the Fens: The Mysteries of Ely Cathedral"

A talk by Nigel Pennick on Saturday 22nd March, 10.30 a.m. to 12.30

This talk is followed up by a subsequent visit to Ely Cathedral with Nigel on Saturday 10th May 10.30-12.30. Donations £5 (with the addition of £4.40 for Ely, conc. £4.00)

Numbers are limited. To book please contact: Mrs. Sally Tolhurst, Fyletts Manor, The Green, Hawstead, Bury St Edmunds IP29 5NP.

Thought Creates.....

Fear can be our friend and our foe. It is our friend in times of extreme crisis aiding our chances of survival by activating the adrenalin kicking in our fight or flight mechanism. More often it is our foe, welling up within us in many different ways; fear of our loved ones or ourselves being hurt physically or emotionally, fear that someone else might be better at something or have something better than ourselves, seemingly irrational fear of spiders, mice, snakes etc. phobias that are difficult to come to terms with, also greed, envy and anger. We become victims of our fears.

Anger can be the most destructive form of all fear, possibly simmering for long periods of time or erupting in aggression or violence. Even anger can have a positive outcome if it sparks in us the desire to find out what we were afraid of that made us so angry and by asking ourselves if our reaction could have been avoided had we understood the cause of the fear.

Our thoughts are creative energy, and emotion is energy in motion. Emotions of fear not only permeate ourselves but move out to affect other people, and animals in particular, know immediately if we are afraid of them. Like energy attracts like energy. We attract what we fear. How often do we groan and say "I knew that was going to happen" when the disaster we were dreading actually takes place.

All the ancient religions and traditions of the world exhort us to "fear not". Fear is the other end of love, and we have the choice of whether to live in fear or in love. S.T.

Calling All Prospective Writers:-

....to compose a story for the Hawstead Journal which will be published in approximately six episodes.

"Once upon a time....", or "She took off her false mink stole....", or "His shoes stuck to the carpet as he carried his pint back to his chair...", or use your own ideas?

FOR SALE	
Two Young Cockerels	Hardwood Table
Free to a good home or oven!	Small Hardwood circular tripod table
Tel: 386248	Tel: 386248

Tree PlantingVolunteers requested

Hawstead Village Tree and Shrub Planting:

I now have the village's allocation of whips for planting, the majority of which will be planted as infill in the Millennium Field and to the front of the church car park. This does not take very long, around 1½ hours at the most. Please bring digging tools.

Meet at the Millennium Field on **Sunday 16th February** at 9.30 am

Brook Green and Village Tree Planting:

The continued scrub clearance and maintenance of Brook Green will be on the morning of **Sunday 23rd February** at 9.30 am. In past years, there has been a very good response from volunteers and the work has been completed in approximately 2½ hours. Many hands make light work. Please bring cutting/slashing tools, e.g. secateurs, billhooks, saws. The scrub is mainly bramble and blackthorn. Meet at Bells Lane Bridge.

Brian Kew Tree Warden



Letter of Complaint

Dear Sir,

Flooding in the village! I'll tell you about flooding. When the well overflowed in our mansion, there was water everywhere. Swarms of plankton, not seen since the parting of the Red Sea swilled around our staff quarters. What did we do? We complained that's what we did.

The Water Board said "Try the River's Authority" who said "It's the farmer", who said "The Local Authority", who said "Try Highways", who said "Try the Plankton Preservation Trust", who said "Contact the Service Manager at Red Sea p.l.c."

The water eventually subsided while I was in the Stress Clinic.

Yours
Morris

Tip Top Internet Tips:

In previous offerings under this banner the 'search engine' "Google" has been referred to. (Where do they get the names?!) It certainly has been the flavour of the month for a good time now – mostly due to the fact that it is pretty good at delivering the goods. It also has a very clean, simple appearance, which helps.

There are a number of others, some with equally weird names. Most have a UK web address although they may originate in America, so they have a fairly European flavour about them:

AltaVista (www.altavista.com) This was the one I started out on a number of years ago. I had a job logging on to it this time around – I kept getting a blank screen, so thought it had 'gone off the air'. Eventually it came up and performed satisfactorily. There's a busy home page, like a number of others.



Ask Jeeves (www.ask.co.uk) You type in a question rather than keywords.

Excite (www.excite.co.uk) Here you can search by regions in the UK. There's a useful 'preview' feature so you can decide on a website before going to it.

FAST/All the Web (www.alltheweb.com) Originated in Norway, 1997 and now catalogues over 2.1 billion web documents. There is a clean appearance, basic/advanced modes and the latter looks more developed than Google

Hotbot (www.hotbot.lycos.co.uk) is owned by Lycos (see next): it has basic and advanced modes similar to Google – but possibilities look a bit more developed.

Lycos (www.lycos.co.uk) A busy home page enables a simple search but there is an advanced mode; also a directory where you can select from 15 categories.

Teoma (www.teoma.co.uk) means 'expert' in gaelic, apparently! A very clean screen; you can refine a search & link to 'collections from experts & enthusiasts'

UKplus (www.ukplus.co.uk) Owned by BT Looksmart. There is a basic search plus directory of 10 categories; it can also link direct to Ask Jeeves and AltaVista

Yahoo (uk.yahoo.com) (no 'www') As with some others, the home page is a 'portal', with links to other offerings from Yahoo. There are basic and advanced searches, similar in style to Google.

There are also some so-called 'meta- search engines' which search a number of other search engines at the same time! Two of these are Profusion (www.profusion.com) and WebCrawler (www.webcrawler.com) In each of these, about a 12 selectable search engines can be chosen!

Since writing the above I've come across a sort of search engine advice site: searchenginewatch.com (no 'www') There's lots more information about search engines: their 'top choices' are Google, FAST/Alltheweb, Yahoo and one I hadn't considered, MSN Search from Microsoft (search.msn.com – no 'www'). A.P.

Castaway Top Ten

This month's village green Castaway is Morris from Hawstead:-

- | | | |
|-------------------------------------|--------------------------|--|
| 1. The Best of Marcel Marceau | M.M. | I like quiet music. |
| 2. Complaintations | Cliff Richard | Obvious. |
| 3. Thunder & Lightning Polka | Strauss | Helps me think. |
| 4. Anything by Stockhausen | | To remind me how bad 'music' can be. |
| 5. Handels Larger | | Loverly |
| 6. Going Out of My Head | Cilla Black | I know how she feels.
(So do I!-Ms Morris) |
| 7. Devil Woman | Cliff Richard | |
| 8. Eternal Caravan of Reincarnation | Sultana | |
| 9. Love Is Like a Butterfly | Dolly Parton | Reminds me of wild life and other things. |
| 10. Speed The Plough | Traditional Morris Dance | I could dance and dance and think of tractors. |

Favourite Track: "Handels Larger"

Next months Castaway is Andrew Bury from Pinford End.

Hawstead Quiz

Here is a brain teaser for all Hawstead residents to help pass away the wintery days/nights:



1. In what year was the earliest written record of the parish?
1. Where is the Gospel Oak located?
2. How many paupers were there in Hawstead in 1801?
3. When was the old Guild Hall newly built?
4. When was All Saints Church completed?
5. What percentage of homes in Hawstead own a computer?
6. In what year did Hawstead Council take on the responsibility of the Green?
8. How many acres does Hawstead Place Farm extend to?
9. How long did Greene King own the Metcalfe Arms?
10. How long will London Inn Group own the Metcalfe Arms?

For answers please see underneath the Editors Letter on back page.

P.S. You may find your copy of the Hawstead 2001 Year Book helpful!
N.G.

Poems

In previous issues we have had a poem, and are very grateful to Margaret Crockford for her contributions, but I thought this section might be a good vehicle for the younger members of the Hawstead community to contribute to the Journal.

This could be in the form of a poem, a piece about their best holiday, favourite hobby, loved pet etc.

To start the ball rolling, although not particularly jolly, I am including a poem written by my son Oliver when he was 14 years old and had been studying the first World War in History at school and found his visit to Ypres on a school trip very emotive.

The Front Line

By Oliver Gibb

Waiting, waiting for the sign
Waiting, waiting to be in the Front Line
I may be brave, I may be bold
But one day when I'm very old
I will sit and think about the time
When I was part of the Front Line

The silence sign
Over go the Front Line
The gun shots start as fast as my heart
Ahead is the gas we will never pass
I join the retreat with hundreds dead amongst my feet

And to this day, I hear them say
I remember the war time
When I was part of the Front Line
Most charged out to meet their deaths
Whilst others had their final breaths
But I survived and now I'm here
Back at my home of happiness and cheer.

Thought For The Month.....

"Never let the dreams of the future limit your enjoyment of the present."

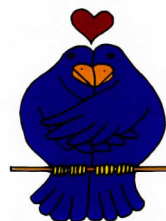
Did you know these interesting Valentines Traditions?

In Wales, wooden love spoons were carved and given as gifts on February 14th. Hearts, keys and keyholes were favorite decorations on the spoons. The decoration meant, "You unlock my heart!"

In the Middle Ages, young men and women drew names from a bowl to see who their valentines would be. They would wear these names on their sleeves for one week. To wear your heart on your sleeve now means that it is easy for other people to know how you are feeling.

In some countries, a young woman may receive a gift of clothing from a young man. If she keeps the gift, it means she will marry him.

Some people used to believe that if a woman saw a robin flying overhead on Valentine's Day, it meant she would marry a sailor. If she saw a sparrow, she would marry a poor man and be very happy. If she saw a goldfinch, she would marry a millionaire!



A love seat is a wide chair. It was first made to seat one woman and her wide dress. Later, the love chair or courting seat had two sections, often in a S-shape. In this way a couple could sit together - but not too closely!

A. G .

Heard in Hawstead

A concerned husband on hearing on the local radio that a car was travelling the wrong way on the A14 phoned his wife to warn her. "Darling" he said, "be careful, there's some idiot driving the wrong way on the A14". "There's not just one," she said, "there's hundreds of them!"