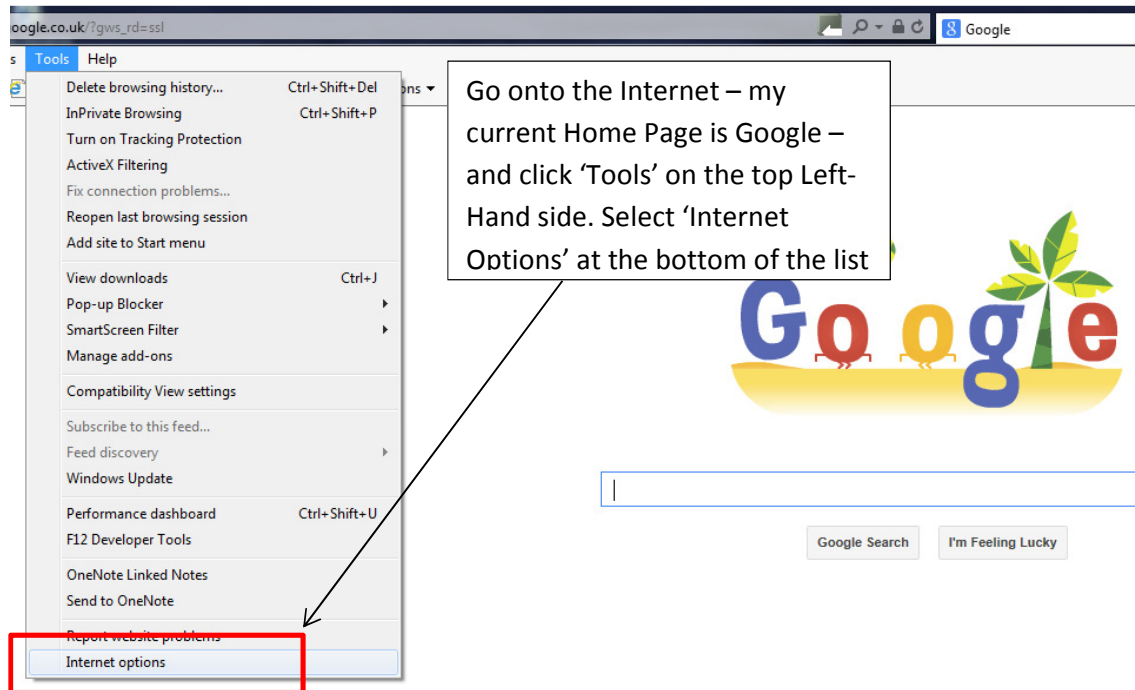


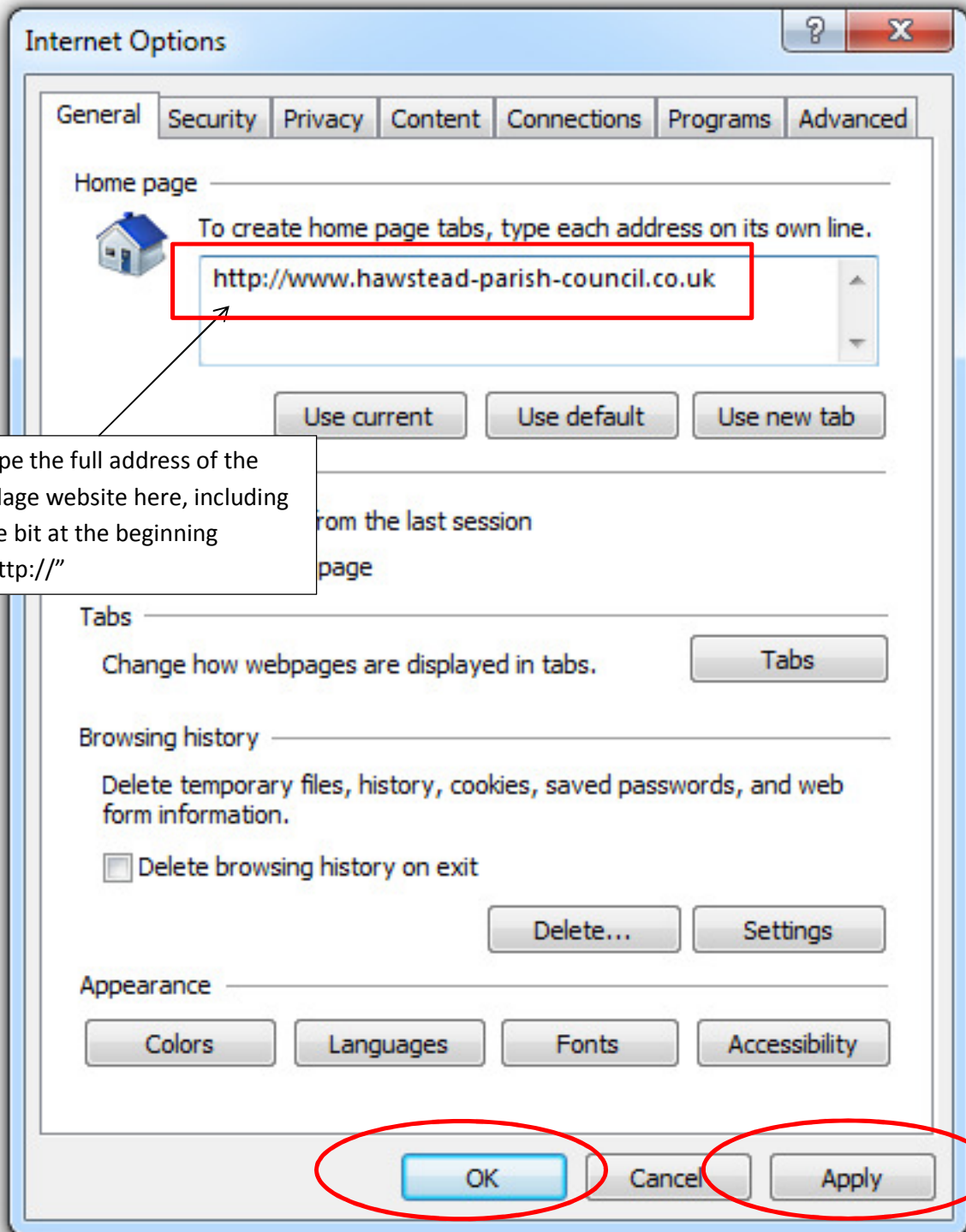
How to Make the Hawstead Village Website your Home Page

When you switch on a computer and go to the Internet, the screen it presents to you first of all is the 'Home Page'. You may have left it with whatever was set when you bought your computer but it's dead easy to change it to something else. How about making the village website your Home Page?!

(Please note there may be variations on these screen-shots according to the version of the Internet 'browser' that you have.) Most people have Internet Explorer from Microsoft – now in its 11th edition – but other popular ones are Firefox and Chrome, and for Apple computers, Safari. I will illustrate the first two of these.

1) Internet Explorer





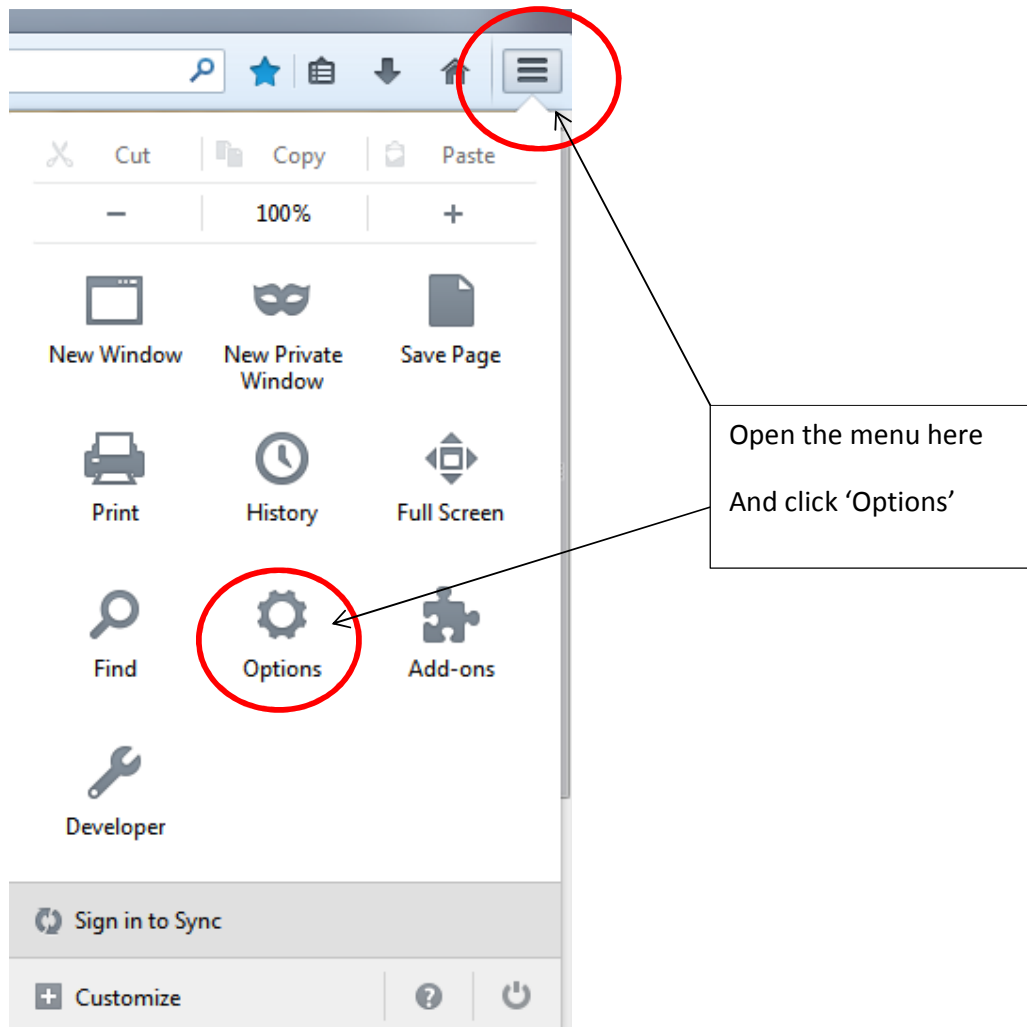
Type the full address of the village website here, including the bit at the beginning "http://"

Then click 'Apply' followed by 'OK'

Now close the Internet. Next time you start it up it will open with the Home Page of

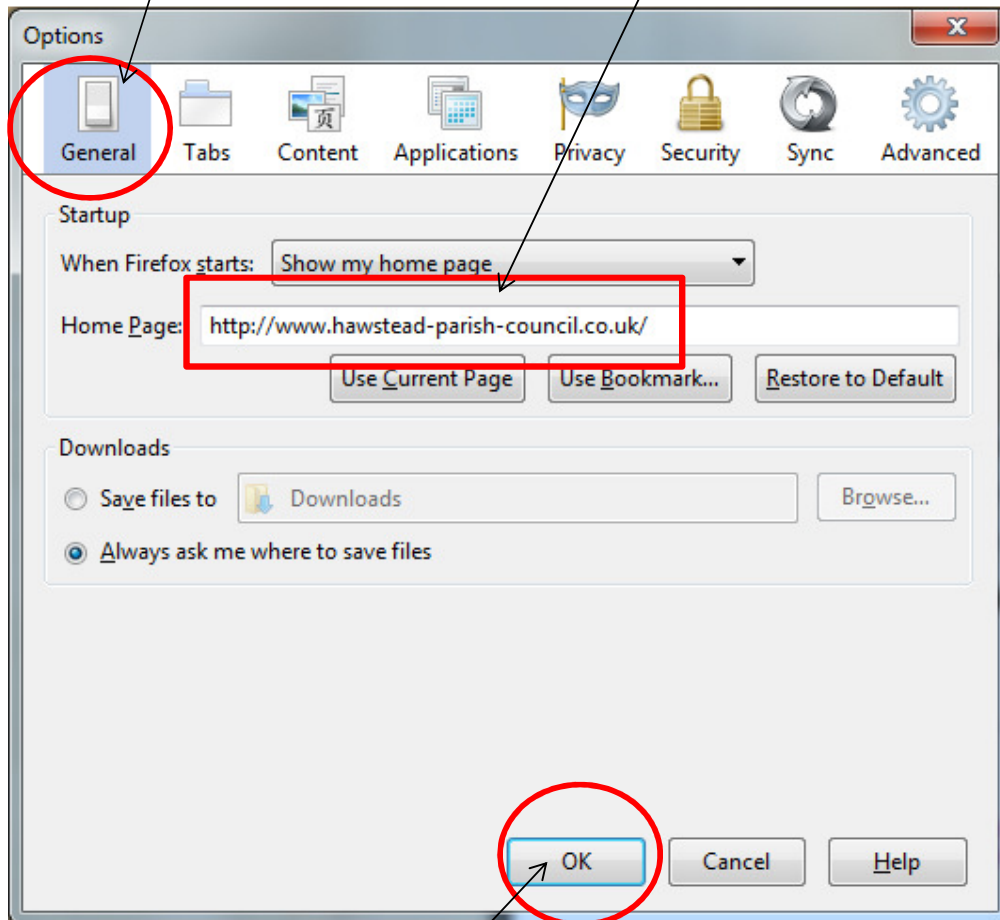
www.hawstead-parish-council.co.uk

2) Firefox



Make sure you're on the 'General' tab

Type in the website address in the 'Home Page' box including the http:// bit



Click 'OK' and that should be it –job done!