

DATES FOR YOUR DIARY

(in the hall unless otherwise stated)

Community Council - Meeting Monday 3rd October - 7.30 pm All are welcome to attend.

Parish Council Meeting - Thursday 17th November - Public Forum 7.30 pm. Please come along and see your Parish Council making decisions on your behalf.

Harvest Thanksgiving Service in the church - Sunday 29th September - 11 am. Gifts of Fruit, Veggies, Tins etc. very welcome - suitable items will be taken to the Vineyard Church to make up food parcels for the homeless in Bury St Edmunds.

The World's Biggest Coffee Morning - Saturday 1st October - 10.30 am to 12.30 pm. Contact Joyce 386314

Harvest Supper - Saturday 8th October - 7.00 pm for 7.30 pm. £10 to include a glass of wine. Please let Lesley Carey know if you are coming along to this. Tel 386132

Concert and Coffee Morning in aid of MacMillan Cancer Support - Sunday 9th October - 11.30 am. See page 4.

Philip Metcalfe Almshouses Trust 200 year Celebration - Saturday evening 19th November. Tickets from Malcolm Cornwell or Joan Cook - see page 5

Village Pantomime 'Cinderella' - 7th and 8th January 2012. Please let Ros Alexander know if you wish to take part.

REGULAR EVENTS

Breathe Easy - Weekly on Tuesdays 9.30 - 10.30 am

Craft Group - Last Wednesday of the month 10.30am - 1 pm

Carpet Bowls - Weekly on Tuesdays 7.30 pm

Reading Group - Monthly 1st Wednesday 7.30 pm

Hawstead Journal

For the Village by the Village

Editor: Geraldine West

September 2011

HAWSTEAD FETE, FLOWER AND PRODUCE SHOW 2011

A large number of hardy villagers and a few from more far-flung places attended this year's fete on Sunday 4th September. Despite the best efforts of the weather to spoil the fun, a good time appeared to be had by all, even those who got even wetter, during their time in the stocks!

To all those who helped on the day, from setting up to putting things away or donating prizes, the Community Council would like to offer their grateful appreciation. Without your efforts the fete would not take place. Also thank you all for attending, as without you there really would be no point in continuing this old tradition. If anyone has any ideas on new activities or how to improve current ideas, please let us know, so that we can look into them for next year.

Listed below are the winners of the various trophies from this year's flower and produce show.

- **Newman Cup** to the exhibitor gaining the greatest number of points - Fran Evershed
- **Sherriff Cup** to the best all-round exhibitor in section A - Fran Evershed
- **Mortlock Shield** for the greatest number of points in section E - Joanne Abbott
- **Under 7** - for the most points gained by a child 7 yrs or under - Casper Warby
- **Under 16** for the most points gained by anyone aged 6 - 16 yrs - Bethany Evershed
- **Pewter Pot** to the exhibitor from Hawstead exhibiting the best onions - Fran Evershed
- **Glass Trophy** for the best flower arrangement - Carol Marsh
- **Holdway Bowl** for the greatest number of points gained in section B - Paul Caldwell
- **Millennium Trophy** for the best exhibit in the show - Bethany Evershed.

Congratulations to you all.

James Bulbrook

Chairman, Hawstead Community Council

Hawstead Flower and Produce Show

Congratulations and thanks to everyone who put entries into this year's Hawstead Flower and Produce Show. The judges asked that you should all know how impressed they were with the quality and quantity of the entries. It made hard but enjoyable work for them. There were over 160 individual entries, many more than in recent years and especially pleasing was the increased number, and high standard of junior entries. You will see from the list of trophy winners that the entry judged the "best in show" was in a junior class.

I hope the magnificent display in the village hall this year will inspire many more of you, adults and juniors, to join in next year, it really is great fun. We don't take it too seriously, no one will criticise anyone's entry, but please read the schedule carefully. If an entry does not comply accurately, it cannot be judged.

Hopefully there are classes that will suit everyone so come on, let's all make a resolve to put in at least one entry next year.

Please will you let me know if you think of a new entry class that may appeal to a number people? Trophy winners have the *privilege* of having their name engraved on it, *at their own expense*; this can be a bit of a burden on the very successful exhibitors. Could it be time to discontinue this practice?

Simon J Miller

Flower and Produce Show Organiser

SUFFOLK RURAL NEWS

Want to reduce your council tax?

Feeling the pinch? Lots of people are finding it harder to meet their bills. It may be that you are eligible for a reduction in your council tax. If you think this might be the case, and/or would like more information, contact Anglia Revenues Partnership by phone on 01284 756587

Don't lose your right to vote

Electoral registration forms should have been received by every home in the village, to check that the electoral services team have the right information about who is entitled to vote. Make sure you have sent the form back, even if your details have not changed. You need to keep your registration up to date so you can vote when an election is called. If you did not receive a form, or have a query about registration, please contact the Electoral Services team by phone on: 01284 757131 or by email at elections@stedsbcc.gov.uk revenues.gov.uk

Age UK Suffolk's Independence Advisors' service

The free Independence Advisors Service covers the whole of Suffolk. Friendly, well informed advisors will give you information and advice about any aspect of your daily life in the comfort and privacy of your own home. They can help you access a wide range of services from finding a cleaner, getting a benefits check, joining social activities in your local area and much more.

If you, or anyone you know or care for, is over 60 and concerned about being able to live independently at home, please get in touch.

For more information, or to request a visit, please contact Age UK Suffolk by phone on 01473 288048.

Hawstead Journal

Contributions to Geraldine West, Editor Kellycroft, The Green, Tel 388723,
email geraldinewest@waitrose.com

Please also let me know if you would like to sponsor the Journal - £25 - in return you are offered a half page to advertise your business if you so wish.

THE FISHERMEN OF HAWSTEAD - update

Doris has 'come out' again.



On Friday 2nd September Doris was caught by Laurence and weighed in at 33lb 4oz. So, as you can now see this fish (Mirror Carp) is healthy, sprightly and still putting on weight (it was only 32lb 2oz when Josh caught it earlier in the summer. I had wondered if in the same light as dogs

looking like their owners, if fish look like the people who catch them, but I am told that is not the case!

Laurence and Josh are now back at school and finding the school is such an inconvenience when you could be doing something useful like fishing!!

Doris is the biggest fish in the lake (Middle Reservoir, Bradfield Combust), So who knows where the boys will be fishing next! - watch this space.

And thank you to all of you who have helped them with offers of work, fishing passes, etc.

Fran Evershed

Please let me know if you want tickets for

Dick Whittington and his Cat

at the Theatre Royal Bury St Edmunds

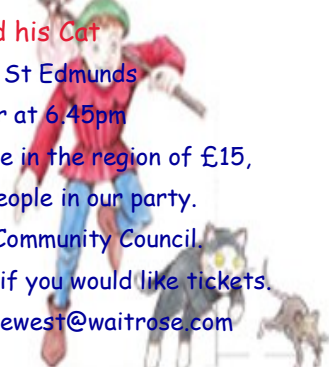
On Friday 30th December at 6.45pm

The price of tickets for adults will be in the region of £15, perhaps less if we get enough people in our party.

Children will be paid for by the Community Council.

Please let me know as soon as possible if you would like tickets.

Geraldine - 01284 388732 geraldinewest@waitrose.com



This month's Hawstead Journal
has been kindly sponsored by
Henry and Hayley Brewis
of Pinford End.

AN INVITATION

MANY OF US KNOW SOMEONE
WHO HAS OR HAS HAD CANCER.

PLEASE COME AND ENJOY A CUP
OF COFFEE, CAKE AND A CHAT

TO HELP US RAISE MONEY FOR
MACMILLAN CANCER SUPPORT



**WE ARE
MACMILLAN.
CANCER SUPPORT**

ON SATURDAY 1ST OCTOBER 2011

10.30 A.M - 12.30 P.M.

IN HAWSTEAD VILLAGE HALL.

WE WOULD BE VERY GRATEFUL TO
RECEIVE DONATIONS OF CAKES

AND ANY UNWANTED ITEMS THAT
YOU MAY HAVE FOR THE TOMBOLA .

MANY THANKS,

WE LOOK FORWARD TO SEEING YOU.

JOYCE DAINTY

01284 386314

**PUT A
SMILE
ON YOUR
MUG!**

COFFEE MORNING

CONCERT

by the Piper Quartet

Fran Evershed and Vanessa Burton - flutes
Ros Alexander - 'cello, Polly Carnegie - piano

Sunday 9th October

11.30am

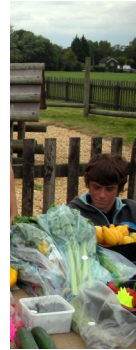
HAWSTEAD VILLAGE HALL

Tickets: Adult £6, Child £4
Including coffee and homemade biscuits

All proceeds to Macmillan Cancer Support as
part of the Worlds Biggest Coffee Morning

For more information and ticket reservations
contact Fran on 01284 386501

Macmillan Cancer Support





You can download these and other photos of the fete, flower and produce show at <https://www.dropbox.com/home#:::66442382>



The Philip Metcalfe Almshouses Trust **Hawstead**

is celebrating its 200th Year
on the evening of
Saturday 19th November 2011

Chairman Anthony Holliday and his fellow Trustees
cordially invite Hawstead villagers to apply for free tickets
for this event, where they, together with other guests,
will be entertained with an
evening of celebration in the village hall.

Music will be provided by the U3A choir and a talk on the
history of the Almshouses in Hawstead and of the village
will be given by the well-known Clive Paine.

Light refreshments and wine will be served and a special
commemorative cake will be cut during the interval.
The limited number of tickets will be allocated on a
first-come-first-served basis.

Kindly ring Joan Cook (Clerk to Trustees)
email cook_hawstead@btinternet.com telephone 386711 or
Malcolm Cornwell (Trustee)
email malcolmcornwell@tiscali.co.uk telephone 388142



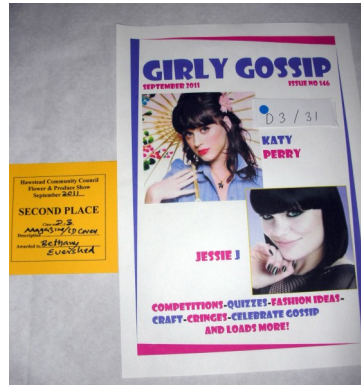
The Judges



HAWSTEAD FLOWER AND PRODUCE SHOW 2011



Some of the Winners



Best in Show - Bethany Evershed

